



# DELVIEW SECONDARY SCHOOL

## 2024-2025 Student Handbook

Delview Secondary School  
9111 - 116th Street  
Delta, BC, V4C 5W8  
Phone: 604-594-5491

On the traditional territory of the Tsawwassen, Musqueam, and  
hən̓q̓əmin̓əm speaking peoples

School Website: <https://dl.deltasd.bc.ca/>

School Website Scan Code:



Principal:  
Mr. J. Pavao

Vice Principal:  
Ms. C. Oliver

This agenda belongs to:

---

## Table of Contents

Bell Schedules and Hours	3
Connecting with Learning at Delview	4
Parent Connect	4
Student Connect	4
Google Apps for Education tools (GAFE)	4
Delview School App	5
Fees and Yearbook	5
Flex Time	6
Teacher Collaboration Time	6
Attendance and Absence	6
Attendance	6
Accidents, Illness, and Extended Illness	7
Vacation During School Time	7
Phone Numbers and Address Changes	7
Code of Conduct	8
Unacceptable Behaviours	8
Consequences for Unacceptable Behaviours	9
Suspension	9
Notification	11
Student Threats to Safety	11
Academic Integrity	12
Social Media	13
Search and Seizure	13
Camera Surveillance	13
Visitors	14
Athletics Code of Conduct	14
Student Athletes	14
Delview Spectator Code of Conduct	15
Student Responsibilities	16
Locks and Lockers	16
Student Dress	16
Bicycles, Cars, and Parking	17
Smoking and Vaping	17
Cell Phones and Electronic Devices	17
Study Blocks	18
Respect for Delview's Grounds	18
Fire and Emergency Alarms	19
Textbooks and Library Books	21
Academics	21
Performance Standards	21
Letter Grades	22
Honour Roll	22
Definition of "A Student in Good Standing"	22
Awards and Recognition	23
Work Habits	23
Graduation Requirements	24
The Capstone Project	25
Student Services	26
Map of Delview	28
Important dates	29-30

## Bell Schedules and Hours

### Regular Bell Schedule (Monday, Tuesday, Thursday, Friday)

Warning Bell	8:25 am
Period 1	8:30 am - 9:40 am
Flex Time	9:45 am - 10:20 am
Period 2	10:25 am - 11:35 am
<b>Lunch</b>	<b>11:35 am - 12:15 pm</b>
Warning Bell	12:15 pm
Period 3	12:20 pm - 1:30 pm
Period 4	1:35 pm - 2:45 pm

### Wednesday Bell Schedule

Collaborative/Prep Time	8:30 am- 9:30 am
Warning Bell	9:25 am
Period 1	9:30 am - 10:35 am
Period 2	10:40 am -11:45 am
<b>Lunch</b>	<b>11:45 am -12:25 pm</b>
Warning Bell	12:25 pm
Period 3	12:30 pm - 1:35 pm
Period 4	1:40 pm - 2:45 pm

### Block Rotation

<b>Mon.</b>	<b>Tue.</b>	<b>Wed.</b>	<b>Thu.</b>	<b>Fri.</b>
A	B	A	C	D
B	A	B	D	C
C	D	C	A	B
D	C	D	B	A

### Regular Office and School Hours

Office Hours	8:00 am - 4:00 pm
Building Hours	7:30 am - 6:00 pm

Students are not to be in the building after 3:30 PM or on weekends or holidays unless they are participating in a teacher-sponsored activity or community event.

## Connecting with Learning at Delview

### **What is MyEd BC?**

MyEd BC is an online platform that students must use to see schedules, report cards, and to choose courses. Students can log in using their Go Card Student numbers at the following site: <https://myeducation.gov.bc.ca/aspden/logon.do>

### **What is Parent Connect?**

An online program that allow parents/guardians to review:

- o Student schedules (what they are studying and when)
- o Attendance (real-time to current day)
- o Report card marks and comments (when appropriate)
- o History of marks/transcripts for all previous years' final marks
- o Permission forms like the one for Google Apps for Education online tools (see below) and school fees

How to sign into Parent Connect:

- o Go to this website to create an account:  
<https://cimsweb.deltasd.bc.ca/schoolconnect/parentsignore.aspx>
- o Once you have signed on successfully – we strongly recommend you change your password right away.

### **What is Student Connect?**

An online program that allows students to access:

- o Attendance (real-time to current day)
- o Report card marks and comments (when appropriate)
- o History of marks/transcripts (for all previous year's final marks)

How to sign into Student Connect:

- o Go to this website to create an account:  
<https://cimsweb.deltasd.bc.ca/schoolconnect/stuconsignon.aspx>
- o Use your 5 or 6-digit student I.D. number as the username.
- o Default Password is available at the office. Once changed, your password will be the same for First Class and Google Apps for Education (GAPE).

### **What are Google Apps for Education tools (GAFE)?**

Students in the Delta School District have access to Google Apps for Education (GAFE). GAFE is a globally used collection of secure, online, "cloud-computing" tools that provide students with a set of tools for digital productivity, file storage, collaboration, and communication (Google Classroom, Docs, Sheets, Slides, Forms and Drive). These tools and storage are accessible on any device at any time.

Deltalearns GAFE is different from a personal Google account as GAFE provides students with unlimited storage, no advertising, and no scanning of content by Google. Students can learn more about creating their account at <http://bit.ly/gafestudent>

### **What is the Delview School App?**

The Delview School App is a way for students, parents, and guardians to receive notifications directly to their cell phones from the Delview office or from teachers who have set up channels.

It does not allow students, parents, or guardians to communicate out. It only allows them to receive notifications sent from the school.

It can be downloaded by students, parents, and guardians on as many devices as they wish by searching for "My School Day" in most App Stores. The cost of the app is covered by school fees.

## Fees and Yearbook

Students are required to pay the Student Activity Fee that covers the cost of in-school intramural social and athletic activities, locker and lock rental, the school app, student GO-CARDS for transit discounts, and student leadership.

Starting this September of 2024, the district will be collecting a \$10 annual fee for Emergency Preparedness that schools will be collecting.

Grade 12 students are charged an additional fee to cover some of the costs of graduation activities and Valedictory Ceremony caps, gowns, and photos.

All fees are viewable and payable on Parent Connect or in person at the office.

Student fees must be up to date in order to participate in school dances, grad activities, or to purchase a yearbook.

Yearbooks typically cost \$55 and students can purchase them in September.

## Flex Time

Flex Time is a period on Monday, Tuesday, Thursday, and Friday for students to self-regulate and prioritize their learning; it is instructional time, and all students are expected to be in a registered Flex space as attendance is taken in Flex. Students should be with one of their registered teachers or in an "open" space (e.g. gym or library).

Flex is an opportunity to: complete assignments and tests following an absence, prepare for upcoming assessments, reduce evening homework, make progress on long-term assignments, meet with peers to complete group projects, practice presentations, improve your skills in a specific area, or engage in a personal passion project.

## Teacher Collaboration Time

This adjustment to the bell schedule will provide time for teams of teachers to critically analyze instructional and assessment practice and share ways and means to better support our students, while protecting instructional time. Each "Collaboration Day" will result in a 9:30am start time for students on Wednesdays.

## Attendance and Absence

### **Attendance**

Students are expected to attend all classes on time. Absences are only excused if a phone call, email, or note is received from a parent or guardian.

A parent/guardian is asked to call the school at 604 594-5491 to excuse an absence. If calling after hours, please leave student's name, grade, reason, and possible length of the absence.

Our automated system emails the home of every student with an unexcused absence on every school day.

A persistent pattern of lateness and absence will be dealt with through parental contact and referral to administration.

Leaving School Early – Students who must leave school during the day are expected to sign out at the office with written permission or telephone contact by a parent/guardian.

### **Accidents, Illness, and Extended Illness**

Students should come directly to the office if they are ill or injured. If the illness appears serious, the school will make every effort to contact parents.

If parents cannot be contacted, the school administration will act *in loco parentis* to secure necessary medical attention.

Students who are feeling ill will be sent home with permission of a parent or guardian.

For extended absence due to illness, the Delta School District provides a visiting teacher to work with the student. This service is set up by the school counsellor once a doctor's note is presented.

### **Vacation/Trips During School Time**

At Delview Secondary, we are not in a position to grant or deny permission for any student to miss school for an extended holiday. Those are parent/guardian decisions. However, we do not endorse students missing school time for vacation/trips.

Teachers cannot duplicate valuable class time for students who are on extended vacations/trips. It is not unusual for students to see a significant decline in marks following an extended absence.

Teachers are not required to provide assignments for students before or after their vacation/trips. Teachers have the discretion in determining how and when assessments are made up so students can demonstrate learning. Arrangements must be made

directly with the student's individual teacher well before a student leaves.

### **Phone Numbers and Address Changes**

The school must be notified immediately of any contact changes during the year.

The school must be able to contact a designated guardian at all times to report attendance, achievement, illness, or injury.

## Code of Conduct

### **Statement of Purpose:**

Delview enjoys a reputation in the Delta School District for its high student achievement, its committed and caring staff, and its many traditions built around participation, fun, and a spirit of contribution and service to the greater community. Delview strives to be a place where staff and students can work, learn, and play in a safe and inclusive environment.

This Code of Conduct applies to students while they attend school or participating in school-sponsored activities. Students are also responsible for out-of-school behaviours that impact the safe, caring, and orderly conduct of the school. Electronic communications that impact the school and students are behaviours that the school may address.

### **Unacceptable Behaviours**

In general, behaviours that are illegal and unacceptable in wider society are also unacceptable at school. It is impossible to list all possible examples here, but unacceptable school behaviours include:

- Failure to follow the direction of any staff member
- Interfering with the learning of others
- Inappropriate or abusive language
- Causing harm or discriminating against another person based on, but not limited to race, religion, caste, gender, physical or intellectual disability, age, marital or family status, sexual orientation, gender identity or expression.
- Interfering with the emotional or physical well-being of others

- Creating an unsafe situation for one's self or others
- Threatening, bullying, harassing, and intimidating including by electronic means
- Physical violence and/or threats of physical violence
- Revenge or retribution against a student who has reported incidents
- Smoking/Vaping on school property
- Possession, use or distribution of alcohol and illegal or restricted substances
- Theft or damage to school property or the property of others
- Criminal gang-related behaviours
- Possession of weapons or dangerous articles including pepper and/or bear spray, laser pointers, firecrackers, knives, or guns.

### **Consequences for Unacceptable Behaviours**

Consequences for unacceptable behaviour are intended to be thoughtful, consistent, and fair under the circumstances with consideration for a student's maturity and intellectual, social and emotional capacity. The severity and frequency of the misbehaviour will also be considered. Where appropriate, the consequence will provide a means for restitution and restorative actions and will involve the offender in determining a corrective plan of action.

Consequences for unacceptable behaviour may include:

- Teacher-assigned consequences
- Detention
- Office referral
- Community service
- Restitution
- Suspension
- Parent meetings
- Referral to counsellors
- Reminder of expected behaviours
- Behaviour contract
- Loss of privilege (e.g., attendance at school activities)

### **Suspension**

Students violating the school's code of conduct, rules or policies may be suspended from school. The type and length of suspension varies depending on the violation and circumstances. Students may be suspended for one to five days

and, in extraordinary cases, suspended to the Assistant Superintendent of the Delta School District.

In all cases, the school will notify parents and request a meeting with all parties relevant. Repeat violations may lead to a withdrawal from Delview Secondary School.

Immediate suspension will likely result for any of the following:

- Intimidation, threatening and bullying:
  - Any threats to harm or injure students or staff whether written, spoken or via the internet and any high-risk behaviour such as possession of weapons will be investigated by trained staff
  - Any investigation may include questioning of students in order to determine levels of risk
  - Parents of students directly involved will be notified
  - Parents and students are strongly encouraged to share any information they have about threat-making behaviour to a member of the staff
- Assault, fighting, or violence of any kind:
  - Any activity that threatens the safety of students or staff will result in immediate suspension
  - Any student who participates, promotes, encourages, or attends a fight will be considered to have threatened school safety.
  - Active observation of a fight may also lead to suspension
- Possession of drugs or alcohol:
  - Possession, use and supplying of restricted drugs and/or alcohol is illegal and will not be tolerated on school property or at school-sponsored events or activities
  - Students having, using, or supplying drugs or alcohol at school will be suspended
  - Students knowingly in the company of others using or having illegal substances also face suspension
- Possession of any weapon, firecrackers, or fireworks:
  - Delta School Board policy prohibits the possession of any weapon including pepper spray, knives, guns, laser pointers or any

- objects that are intended to be used as weapons or replica weapons
  - Students in possession of weapons will be given a level 2 or 3 board suspension and a review of educational opportunities will be conducted
  - Possession of fireworks/firecrackers at school is prohibited
- Vandalism and Property Damage
  - Students who destroy or vandalize school property or the property of others will face disciplinary action and be required to pay for the losses or damage
  - The School Act is clear that students and their parents are liable for any School Board property that is damaged either with intent or through negligence
- Harassment
  - Students who create an unpleasant or hostile situation with uninvited and unwelcome verbal or physical conduct may face suspension. This includes, but is not limited to, gendered, racial, or sexual harassment

### **Notification**

It is understood that communication is essential between home and school. As well, notice will be given to the parents and students within each school of the range of responses that schools may apply to breaches of the Code of Conduct including threat-making behaviours.

Therefore, for breaches of the Code of Conduct, notification may occur as follows:

- Parents of student in breach of the Code of Conduct
- Parents of student victim(s)
- School and District personnel – where appropriate
- Police and/or other agencies – where deemed appropriate or where required by law
- All parents of the school community – when deemed important to reassure members of the school community that school and district officials are aware of a serious situation or incident and are taking appropriate action to address it

- When the breach of the Code of Conduct is possibly criminal in nature, police will be consulted prior to public notification.

### **Student Threats to Safety**

The safety of our students is a top priority for all of us in the Delta School District. When a threat or violent incident occurs, it is taken very seriously, and a student threat assessment may be initiated.

As partners in educating our youth, everyone in the community has a duty to report all threat-related behaviours. These threats include expressing an intent of harm to themselves, another person or property, or acting out violently against them. Whether the threat is spoken, drawn, made with gestures or on social media, they must all be taken seriously. We will investigate and respond to all harmful threats to our students.

### **Academic Integrity**

Delview values honesty; therefore, any form of plagiarism or cheating is considered serious misconduct. Plagiarism is the copying or reproduction of any work without the proper recognition of the original authors. Cheating includes having someone else do an assignment for you, submitting the same assignment more than once, deviously getting answers to a test, and consciously assisting another student to attain marks through misrepresentation. THESE BEHAVIOURS COMPROMISE THE ACADEMIC INTEGRITY OF OUR SCHOOL AND YOUR GOOD REPUTATION.

The incident will be recorded by the teacher and communicated to the parent/guardian. In the event of another incident of cheating or plagiarism occurs, the administration will be informed and will meet with the student and the student's parents.

The following will further constitute cheating or plagiarism:

- Copying and pasting text from on-line media, web site, or using AI to generate work without permission/citation/declaration

- Transcribing text or simply modifying text from any printed material, such as books, magazines, encyclopedias, or newspapers
- Replacing a few select words using a thesaurus does not constitute original work.
- Using a photograph, video or audio without permission or acknowledgement
- Using another student's work, even with a few changes in the wording, and claiming it as one's own, even with permission. This is known as *collusion* and is not acceptable.
- Acquiring work from commercial sources is academically unethical
- Using work that was written for another class or another purpose without getting permission from both teachers
- Allowing another student to copy your work;
- Taking credit for a group assignment to which you have not contributed anything
- Looking at another student's test to view his/her answers
- Use of a cell phone during a test

### **Social Media**

Student safety and the development of social responsibility is a priority in the Delta School District. It is important to have standards and guidelines in place to help young people navigate their way through a media-rich technological world that is seeing an increasing amount of inappropriate and even illegal media usage. The Delta School District is committed to reducing and repairing harm, and to ensuring school safety.

Due to privacy reasons, students are to not take pictures or videos while in school, unless they have permission from a teacher for a school project. Phones and devices are not permitted to be used while in bathrooms or change rooms.

To further protect the well-being of students, social media devices may be subject to search and seizure any time there is reasonable grounds to believe that the device has been used to access, possess, or distribute pornographic images and/or use as defined by the Criminal Code. If possession and/or distribution of pornography has occurred, parents will be contacted, and the school liaison officer may be involved. Although, social media issues often happen outside of school hours, any issues that affect Delta School District staff and/or students may be dealt with as school concerns.

## **Search and Seizure**

There may be occasions when school personnel find it necessary to search a student's locker, personal property, desk or even their person because of suspected breaches of school rules and/or the law.

## **Camera Surveillance**

In the interest of maintaining student safety and the protection of school property, Delview has video cameras in public areas (hallways, exterior of the building, cafeteria, etc.). In dealing with surveillance of students, we recognize our legal obligation to provide appropriate levels of supervision in the interests of student safety and the fact that students have privacy rights that are reduced but not eliminated while the students are under the supervision of the school.

Video surveillance, like other forms of student supervision, must be carried out in a way that respects student privacy rights. A recording is recognized to be subject to the provisions of the Freedom of Information and Protection of Privacy Act.

## **Visitors**

Pursuant to the School Act, schools are considered private property.

All visitors must report to the front office. Parents and persons with official business are welcome.

Except with an administrator's permission, no other persons, including friends of Delview students, are permitted on school property.

Delview students are not permitted on the property of another school without direct teacher supervision or administration permission.

If students notice people in our school who do not belong, students must notify the nearest responsible adult or the office immediately.

Anyone without authorized visitor status is considered an intruder and may be charged with trespass under Section 177 of the School Act and possibly Section 175 of the Criminal Code.

# Athletics Code of Conduct

## **Student Athletes**

The actions of a student-athlete reflect themselves, their team, their school, and their community. However, student-athletes must remember that their participation in school sport is a privilege, not a right. Therefore:

1. Adherence to school policies with respect to attendance, behaviour, and scholastic achievement is a requirement of team membership.
2. No student athlete shall practice or play for any school team on a day that she/he was not in class, without prior and satisfactory notice to the coach/school administration.
3. Student-athletes will:
  1. Treat Everyone with Respect
    - a. Including team-mates, coaches, opponents, event organizers, spectators, and officials.
    - b. Respect and accept, with dignity, the decisions of officials.
    - c. Be generous in winning and gracious in losing.
  2. Exercise Self-Control at all times
    - a. Remember that there is no place in sport for drugs or alcohol.
    - b. Refrain from the use of foul or profane language.
    - c. Refrain from the use of physical force outside of the rules of the game.
  3. Play Fair
    - a. Play within the rules and the spirit of the rules of the game at all times.

## **Delview Spectator Code of Conduct**

Spectators are encouraged and welcomed to attend Delview sporting activities and to abide by the following code of conduct. Spectators will:

1. Treat Everyone with Respect
  - a. Cheer in a positive manner for all competitors.
  - b. Respect the decisions of officials.
  - c. Not interfere with the play or competition
  - d. Be courteous and respectful to other spectators, competitors, coaches, organizers, and officials.
  
2. Exercise Self-Control at all times
  - a. Respect the rules and regulations of the facility.
  - b. Refrain from the use of foul or profane language.
  - c. Refrain from the use of drugs, alcohol, or physical force of any kind.

## Student Responsibilities

### **Locks and Lockers**

Students will be assigned a locker before the start of the year. Students can find their locker number and combination on Student or Parent Connect.

Students will need their own lock for use during PE. It is strongly recommended that students lock their belongings during their PE and Extracurricular activities.

Students should not share their lock combinations with anyone.

The locker is to be kept clean and food stuffs are to be removed on a regular basis.

Students are responsible for cleaning and removing all material from their locker at the end of the year or when they leave the school and return the lock to any teacher or the office.

Neither the school nor the School Board is responsible for items stolen from lockers, changing rooms, or the school; LEAVE VALUABLES AT HOME. NO valuables should be left in the gym change room at any time.

Lockers are school property and both lockers and their contents may be examined by the administration at any time and without prior notice for safety and cleanliness concerns or due cause.

## **Student Dress**

The Delview School community strives to use common sense to ensure clothing is appropriate for a school setting where people of all types get to work and play in a safe and inclusive environment. As such, there are some guidelines for appropriate school clothing.

- Separate gym strip is required in PHE and Dance classes.
- Proper footwear is required at all times.
- Examples of inappropriate attire include:
  - Designs showing weapons and/or violence
  - Logos of a sexual nature
  - Logos with racial/cultural/gender superiority
  - Promotion of the use of drugs, alcohol, or violence
  - Obscene language
  - Sweatshirts with hoods up in the school
  - Wearing of hats in the classroom is at the discretion of the classroom teacher

## **Bicycles, Cars, and Parking**

Bicycles should be securely locked to the available bike racks. Parking at school is a privilege and students must drive safely and follow all traffic rules and those of their graduated license to maintain this privilege.

Students must park in the south parking lot only.

Vehicles parked in any other school area may be towed.

## **Smoking and Vaping**

In accordance with Provincial Tobacco Control Act Section 2.2(2) and Delta School Board policy, smoking or vaping anywhere on school property by anyone is forbidden.

## **Cell Phones and Electronic Devices**

**Please be advised that the school district has updated *Procedure 145 – Use of Personal Digital Devices* in line with the provincial government's direction to restrict the use of cell phones at schools.**

The definition of a personal digital device includes, but is not limited to, any personal electronic device that can be used to communicate or to access the internet, such as cellphones, tablets, smart watches, gaming devices and electronic toys, and includes the use of earbuds and headphones.

Research shows that frequent cellphone interruption in the classroom, social media platforms with addictive algorithms and predators who seek to exploit young people all present significant risks to young people. The revised procedure will create appropriate structures around the use of personal digital devices at school and aims to positively impact students' mental health and ability to focus on learning.

- Secondary Schools: Personal digital devices are not permitted to be used during instructional time, which includes Flex time and field trips, except when explicitly required by the teacher for educational purposes.
- Schools will communicate any additional information specific to their location prior to the start of the new school year.
- Students with disabilities, unique learning abilities or health-related requirements will still be able to use personal digital devices in line with their designated support plans and Individual Education Plans (IEPs).
- Schools will communicate with parents/caregivers should any urgent situations arise.
- If parents/caregivers need to contact their child urgently, they should call the school office.

Educators will continue to spend time teaching digital literacy and promoting online safety with the aim of helping students use their personal digital devices responsibly and respectfully, and to develop lifelong healthy habits around technology and social media use in their everyday lives.

### **Study Blocks**

A study block is available to Grade 12 students. Students on a study block are permitted to leave the school, work in the library or a classroom but are not to be in the hallways during class time. While students may leave the school during their study block, the school cannot be responsible for their supervision or their safety.

## **Respect for Delview's Grounds**

The school's environment is everyone's responsibility. Packed lunches should use reusable containers. All containers should be taken home for reuse or disposal.

We have implemented the new Metro Vancouver guidelines by separating organic litter, recyclables, and garbage using centralized garbage/recycling stations. Students are asked to separate their litter as follows:

- Organics – green bin
- Paper, plastic, and metal – grey bin
- Returnable beverage containers – blue bin
- Chip bags, plastic bags, and everything else that doesn't belong in the other bins – black bin
- Delta School District uses single stream recycling where all paper, plastic, and metal is deposited in the same bin.

## **Fire and Emergency Alarms**

Whenever an alarm sounds, teachers will lead students out the nearest exit in an orderly fashion. If the alarm sounds before classes or during a break, students exit the building and report to their LAST CLASS teachers; students on study report to the reporting station. No one is to re-enter the building until the "all clear" bell sounds (three short rings). Students must note that tampering with fire alarms is a criminal offence. Emergency procedures are reviewed and practiced throughout the school year and posted in classrooms.

# IN AN EMERGENCY



## EVACUATE

*Alternate location may be announced.*

### STUDENTS

*Exit the school and line up with your class for attendance.*

### STAFF

*Evacuate everyone, account and report for all students and staff once outside.*



## HOLD CLASSES

*Short term incident requiring hallways to be empty and remain clear.*

### STUDENTS

*Clear hallways, return to classroom and wait to be released.*

### STAFF

*Hold students in room. Activities can continue as normal. Wait for announcements to release class.*



## DROP, COVER, HOLD

*Take cover to protect your body from flying materials during the shaking.*

### STUDENTS

*Get under desk or furniture. After shaking stops, count to 60 before moving.*

### STAFF

*Lead the 60-second countdown. Check everyone for injuries and evaluate whether to evacuate or shelter in place.*



## SHELTER IN PLACE

*Environmental conditions outside unsafe. Not to be used for violent threats.*

### STUDENTS

*Stay inside the school. If outside, re-enter quickly.*

### STAFF

*Prevent students from leaving the school. Close all exterior windows and doors. Activities may continue at own discretion.*



## HOLD & SECURE

*Potential threat of violence happening in the neighbourhood near the school.*

### STUDENTS

*Do not exit the school. Remain in classroom. Ask permission to enter hallways.*

### STAFF

*Close doors, windows, blinds and shutters. Classroom activities and hallway travel restricted.*



## LOCKDOWN

*Active threat of violence occurring **INSIDE** the school.*

### STUDENTS

*Hide out of sight, keep quiet and do not open doors. If outside, leave school grounds quickly and call 911.*

### STAFF

*Immediately secure the room, stop all activities and direct students to hide.*

Families need to ensure that their emergency contact and release information on Parent Connect is up to date.

## **Textbooks and Library Books**

Textbooks and library books are school property. Students whose books are damaged, lost, or stolen are required to pay a replacement or damage fee.

Replacements texts will not be issued until the fee is paid. Student records and/or yearbooks will also be retained until debts are paid; however, students will be refunded if lost or stolen texts or library books are found and returned in the condition in which they were loaned.

## Academics

The Ministry's Reporting Order states that our grade 8-9 students' assessment will be using performance standards, while our grade 10-12 students' assessment will use letter grades/percentages.

### **Performance Standards (grades 8-9):**

Performance Standards describe levels of achievement in key areas of learning. Delview's Performance Standards describe and illustrate the following four levels of performance in terms of prescribed learning standards relevant to key curricular areas, curricular competencies, and content.

#### **Emerging (EMG)**

- The student demonstrates an initial understanding of the concepts and competencies relevant to the expected learning
- The work currently does not meet grade-level expectations
- There is little evidence of progress toward the relevant learning standards
- Response to instruction maps out the need for intervention and support for student progress

#### **Developing (DEV)**

- The student demonstrates a partial understanding of the concepts and competencies relevant to the expected learning
- The work may be inconsistent; however, it does meet grade-level expectations at a minimal level
- There is evidence of progress toward relevant learning standards
- Response to instruction maps out the need for support in some areas

**Proficient (PRF)**

- The student demonstrates a complete understanding of the concepts and competencies relevant to the expected learning
- The work meets grade-level expectations
- There is evidence that relevant learning standards have been accomplished

**Extending (EXT)**

- The student demonstrates a sophisticated understanding of the concepts and competencies relevant to the expected learning
- The work exceeds grade-level expectations in significant ways
- There is considerable evidence that relevant learning standards have been accomplished and extension of learning has been demonstrated

**Letter Grades (grades 10-12):**

Official reports to parents are issued four times during the school year. In addition, teachers may also send out Interim Reports. The Ministry Prescribed Grading System is as follows:

Term Reports	Percent %	GPA (Grade Point Average)
A = Excellent	86 - 100	A = 4.0
B = Very Good	73 - 85	B = 3.0
C+ = Good	67 - 72	C+ = 2.5
C = Satisfactory	60 - 66	C = 2.0
C- = Minimally Meeting	50 - 59	C- = 1.0
F = Failing	0 - 49	F = 0

IE = “Insufficient Evidence” - the student is *not* demonstrating a minimally acceptable performance, or the student is *still* completing missed work. The teacher will provide an ‘IE’ support plan for the student.

**Definition of “A Student in Good Standing”**

Any student who is in regular attendance in all courses, is passing all subjects, and has not committed any serious breach of the School’s Code of Conduct is eligible to complete the BC Ministry of Education Graduation Requirements at Delview.

A student must be in Good Standing to participate in extra-curricular activities, play on a school-sponsored team, and attend Graduation activities.

## **Awards and Recognition**

Awards are granted to students to celebrate their many accomplishments throughout the year. A student must be in good standing to be considered for any Delview Award.

Awards may be presented in areas such as, but not limited to:

- Academic achievement
- Commitment and effort to personal success in courses
- Citizenship and service
- Skill development and improvement in courses
- Caring and kindness to others
- Extra-curricular involvement
- Athletic recognition

## **Student Self-Reporting of Core Competencies:**

As part of the Ministry's Report Order, students will be self-reporting on the Core Competencies three times throughout the school year: Communication, Thinking, Personal & Social

- Students develop Core Competencies at home as well as at school, making parent/guardian support for students' growing awareness, understanding, and development of the Core Competencies crucial
- Parents/guardians will likely already have some understanding of their students' development in Communication, Thinking, and Personal and Social
- Formal school tasks and activities often look different from the more informal tasks students are involved in at home. While both contexts are valuable, parents/guardians can expect that a student's use of the Core Competencies may look very different in these two contexts
- The illustrations offer examples from a variety of contexts and can provide parents/guardians with a new lens through which to view their students' development as educated citizens

## **Work Habits**

Embedded in the Ministry of Education's Reporting Order, teachers will now be reporting on a student's work habits in their narrative comments. Teachers will comment on

- what the student is able to do and
- an area of growth and what the student can do to move towards this goal.

Any comments about student behavior and work habits must also be expressed in the written comments.

## Graduation Requirements

**All students entering Grade 12 should check course requirements for specific post- secondary programs. Information is available in the Career Centre and with your counsellor.**

The B.C. Certificate of Graduation, or Dogwood Diploma, is awarded to students who successfully complete the provincial graduation requirements. To graduate, students require at least 80 credits total.

Of these 80 credits:

52 Credits from Required Courses and 28 Credits from Elective Courses = **80 Credits Total**

### **Required Courses (52 credits)**

Physical and Health Education	10	Science	10	(4 credits)
Science	11 or 12			(4 credits)
Social Studies	10			(4 credits)
Social Studies	11 or 12			(4 credits)
Math	10			(4 credits)
Math	11 or 12 course			(4 credits)
Language Arts	10 (EFP 10)*	(4 credits)		
Language Arts	11 (English 11)		(4 credits)	
Language Arts	12 (EFP 12)*	(4 credits)		
Arts Education and/or Applied Design, Skills, and Technologies	10, 11, or 12/		(4 credits)	
Career-Life Education			(4 credits)	
Career-Life Connections			(4 credits)	

\* Effective the 2023/24 school year, all students working toward a B.C. Certificate of Graduation ("Dogwood Diploma"), in English or French, must successfully complete at least 4 credits in Indigenous-focused coursework.

### **Elective Courses (28 credits)**

Any Grade 10, 11 or 12 course that is not a required course is considered an elective course. A minimum of 16 of these credits must be at the grade 12 level.

#### **Fine Arts**

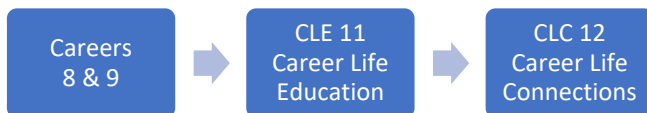
Any Grade 10, 11 or 12 level Art, Drama or Music course meets the Fine Arts requirement.

#### **Applied Skills**

Any Grade 10, 11 or 12 Business Education, Home Economics or Technology course meets the Applied Skills requirement.

**Of the 80 credits required for graduation, at least 16 must be at the Grade 12 level, including a Grade 12 Language Arts course (In addition, students must also complete Literacy 10, Numeracy 10, and Literacy 12 Provincial Assessments).**

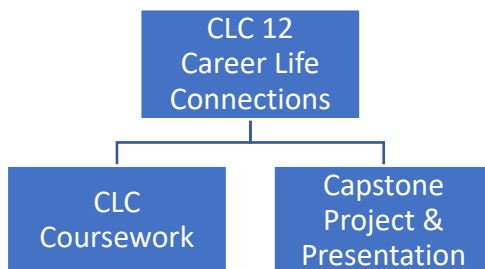
## The Capstone Project



Career Life Connections 12 (CLC 12) is a BC Ministry of Education required course for graduation. It is the concluding course within the Career Education curriculum. It is comprised of two components;

- (1) The course curriculum covered through CLC assignments
- (2) The Capstone Project and Presentation.

At Delview Secondary, the CLC 12 course is delivered through an X block which sits outside of the regular daily timetable. Students are required to meet with the CLC teacher during scheduled Flex times, or through appointments, in order to receive instruction and/or support to complete the course. Capstone is a rigorous learning opportunity for students to explore, grow, reflect, and share a project that has deep personal meaning/interest. Students will share their Capstone Project in the form of a final Capstone Presentation with the CLC teacher and/or a Capstone Teacher Mentor. The purpose of the Capstone Project and Presentation is for students to demonstrate their knowledge, competencies, and passion(s) that they can offer the world. These could link to future post-secondary aspirations, potential careers, or personal growth.



## **Celebrating Graduation**

Grad Committee: Grade 12 students plan the activities for the Grad Class, raise funds to reduce the costs of Grad, and may leave a legacy for future graduating students. All grad-related activities must be respectful of class time and must reflect positively on the reputation of the school. The following events happen in a typical year.

Grad Banquet: The dinner and dance celebrating graduation from high school is open only to Delview Grade 12 students in Good Standing (no guests). Students may attend a Grad Banquet in only one year as a Delview student.

Commencement: This ceremony is held in June to present scholarships and graduation diplomas to all graduating students.

Dry Grad: Is an event planned and operated by parents and usually takes place immediately following the Grad Banquet. Dry Grad is NOT a school sponsored event.

## Student Services

### **Counsellors**

Counsellors are available to work with students in personal counselling, academic and career counselling, as well as providing information about graduation requirements. To set up a meeting with your counsellor, fill in an appointment slip found outside their door.

Grades 8 - 12:

Ms. R. Pooni	(Last Name A – G)
Ms. R. Sharma	(Last Name H – M)
Ms. L. Hughes	(Last Name N – Z)

### **Course Changes, Transfers and Withdrawals**

Students are expected to attend all scheduled classes until they have made changes with their counsellors. Course changes are not possible in every instance. Students must attend all classes even if they plan on changing courses.

Students moving or withdrawing from school must notify the school. Upon withdrawal, the office will provide students with a

checklist to ensure that all textbooks, library books, equipment and outstanding school fees are dealt with before leaving.

**Career Advisor: Ms. Kaur**

Our Career Advisor is available to provide information to students about post-secondary work and study opportunities. She can provide information to students about scholarships and help them learn more about potential careers. Visit the Career Centre, which is located at the far end of the Student Services Centre hallway.

**Capstone/Work Experience/Apprenticeship Coordinator: Mr. Birt**

This person assists students in setting up work experience placements with employers and advises students interested in becoming apprentices for a trade. If you know an employer in a job you're interested in, see the Work Experience Coordinator to set up a placement.

**Teacher Librarian: Ms. H. Minhas**

The library is open before and after school and at lunch. In Grade 8, all students are given a library orientation session early in the school year. The Librarian will be pleased to help you with any questions you may have.

**Office Assistants: Ms. Goltz, Ms. Guzzo, Ms. Berar, & Ms. Crawford**

The Office Assistants perform a variety of valuable jobs for staff and students, including signing you out of school if you must leave early and phoning home when you are absent. They are an important source of information and, like anyone else, they are most helpful when they are treated courteously.

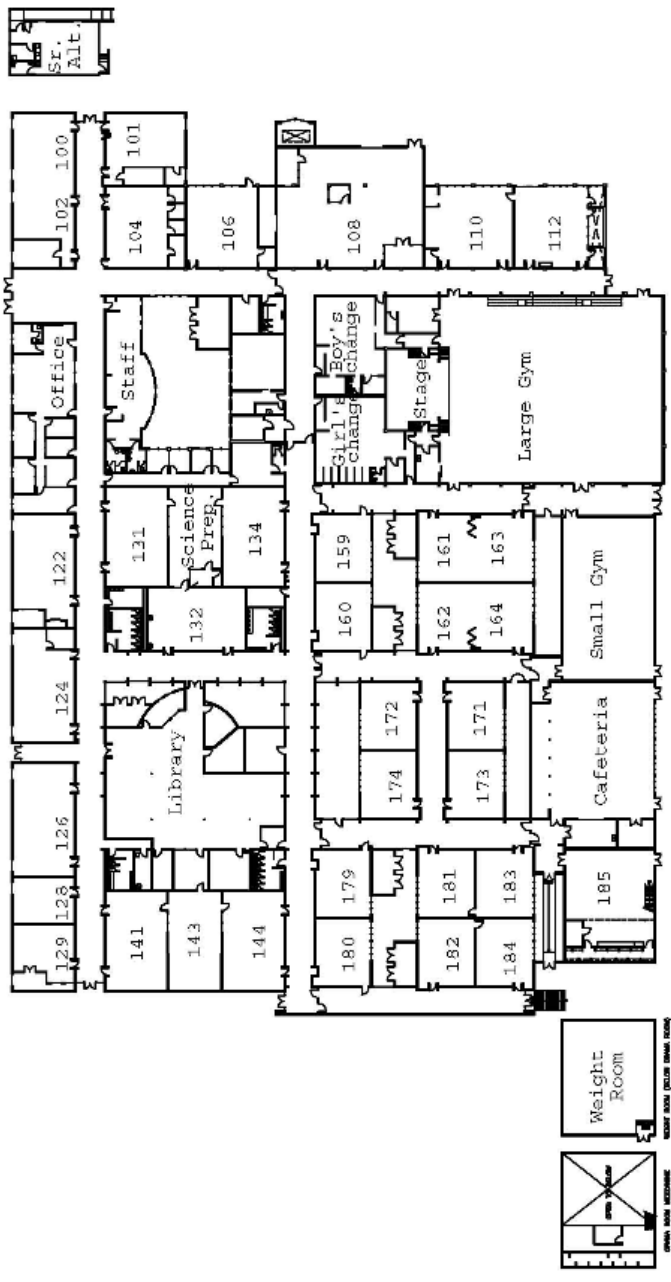
**International Student Coordinator: Mark Pocock**

The role of the coordinator is to assist our international students in their transition into Delview and our high school system, from organizing schedules, to showing students around the school and introducing them to our extra-curricular activities. They also liaison with school staff, parents and the community and can be contacted through the school.

**Custodial Service: Mr. C. Brotonel**

Our custodians work hard to keep the building a clean, safe, and hygienic environment. You can help them by being responsible and using the garbage and recycling containers provided in and outside of the building. Students are expected to be courteous and respectful to custodians, maintenance employees, cafeteria workers, and service or delivery personnel who work in our school.

DELVIEW SECONDARY SCHOOL Main, Entrance





**DELVIEW SECONDARY 2024/2025 SCHOOL CALENDAR  
INFORMATION FOR PARENTS**



Days in Session	187
<b>Hours of Instruction in School Week</b>	<b>Grades 8-12: 26.6 hrs.</b>
Number of Days of Instruction <b>Minutes of Instruction in School Day</b>	180 <b>Grades 8-12: 319 min</b>
Number of Non-Instructional Days	6 (District Wide)
Schools Open (Altered Bell Schedule)	Tuesday, September 3
Semester 1 Starts	Wednesday, September 4
Non-Instructional Day (District Wide)	Friday, September 20
Day for Truth and Reconciliation-Statutory Holiday	Monday, September 30
Thanksgiving Day – Statutory Holiday	Monday, October 14
Informal Reporting-Interim #1	Thursday, October 17
Annual Thanks 4 Giving Food Drive	Thursday, October 17
Parent Teacher Interviews (Early Dismissal @1:00pm)	Tuesday, October 22
Non-Instructional Day (District Wide)	Friday, October 25
Remembrance Day – Statutory Holiday	Monday, November 11
Reporting to Parents (Early Dismissal @1:00pm)	Friday, November 15
Report Card #1- S1 Written Update	Thursday, November 21
Non-Instructional Day (District Wide)	Monday, November 25
Last Day of School before Winter Vacation	Friday, December 20
Winter Vacation Period	December 23– January 3
Schools Reopen after Winter Vacation	Monday, January 6
Non-Instructional Day (District Wide)	Friday, January 24
Semester Break-Course Completion Days	January 27-January 28
Start of Second Semester	Wednesday, January 29
Report Card #2- S1 Written Summary	Thursday, February 6
Family Day – Statutory Holiday	Monday, February 17
Non-Instructional Day (District Wide)	Friday, February 21
Informal Reporting-Interim #2	Thursday, March 13
Spring Vacation Period	March 17 – March 28
Schools Reopen	Monday, March 31
Parent Teacher Interviews (Early Dismissal @1:00pm)	Thursday April 10

Good Friday – Statutory Holiday	Friday, April 18
Easter Monday – Statutory Holiday	Monday, April 21
Reporting to Parents (Early Dismissal @1:00pm)	Friday, April 25
Report Card #3- S2 Written Update	Thursday, May 1
Non-Instructional Day-District Wide (In Lieu-Summer Pro-D)	Friday, May 16
Victoria Day – Statutory Holiday	Monday, May 19
Last Day of Scheduled Classes	Friday, June 20
End of Semester-Course Completion Days	June 23-June 25
Report Card #4-S2 Written Summary	Thursday, June 26
Last Day for Students	Thursday, June 26
Schools Close/Administrative Day	Friday, June 27